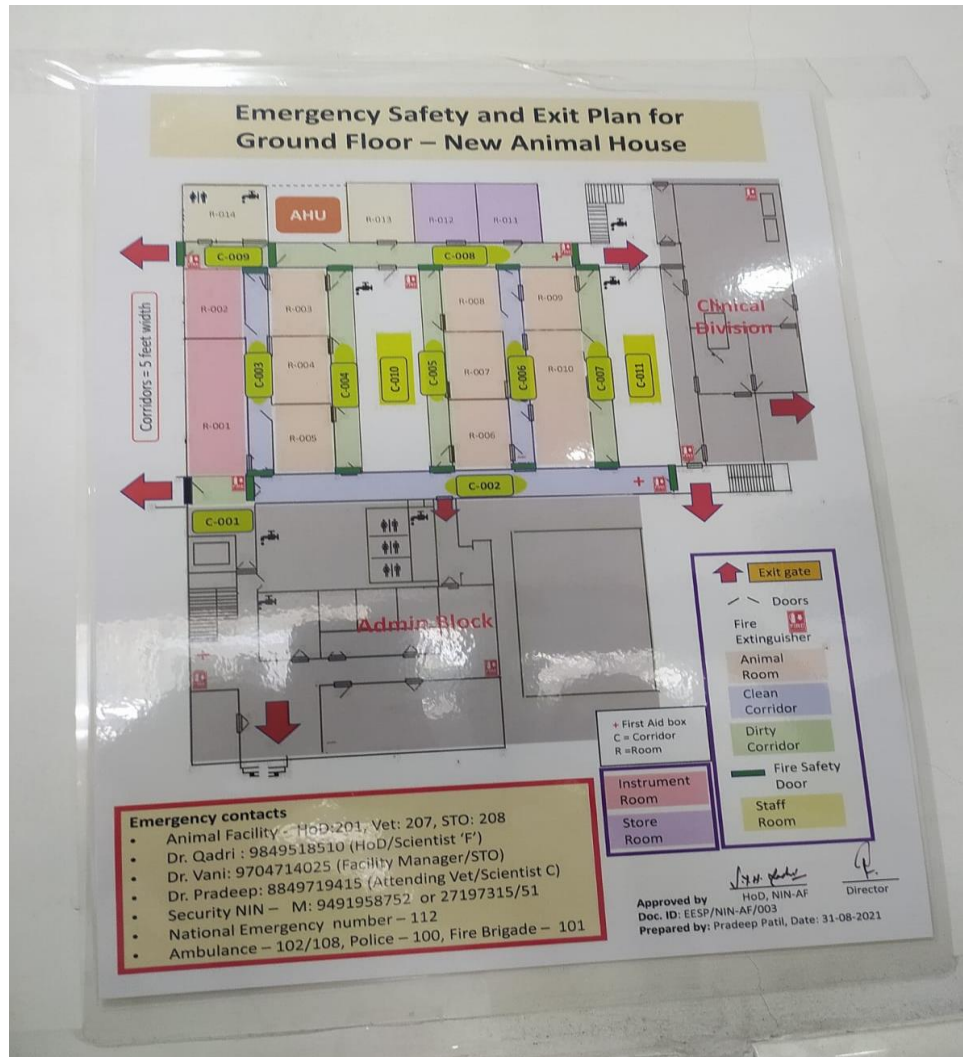


REPORT ON  
ICMR-NIN VISIT

A group of 40 students from the B.pharmacy final year was taken on an educational visit to the ICMR-NIN institution on 16<sup>th</sup> March 2022. They were specifically taken to the ICMR-NIN animal facility to gain knowledge on various species of laboratory animals, animal handling, animal feeding, and formulation of diet supplements for lab animals. The visit was led by Dr. Satyavani and Dr. Pradeep.



The students were first given an overview of the do's and don'ts of animal handling and research prospects following the students were divided into 2 batches and sent for feed processing unit and laboratory animal unit respectively.

In the feed processing unit, students were introduced to the diet plan for the animals. This diet plan is designed to meet the specific requirements for a particular set of animals.

<b>RAT DIET COMPOSITION OF 50 KGS.</b>	
R.B.G.	30.00 kg
Wheat	11.30 kg
Casein	2.00 kg
S.M.P.	2.50 kg
Refined Groundnut Oil	2.00 kg
Vitamin Mixture	0.25 kg
Salt Mixture	2.00 kg
	<hr/>
	50.00 kg
<b>MONKEY, RABBIT, GUINEA PIG DIET COMPOSITION OF 60 KG.</b>	
Wheat	36.80 kg
R.B.G.	16.90 kg
Casein	0.60 kg
Salt Mixture	2.40 kg
Vitamin Mixture	0.30 kg
Refined Groundnut Oil	3.00 kg
SMF	5.00 kg
	<hr/>
	60.00 kg

19-02-2002

The above picture depicts the detailed formulation layout for laboratory animals to ensure optimum health



Various machines used in this facility are mixers pulverisers, pelletizers, autoclaves, weighing machines, and heavy metal detector.



The other batch of students was sent to the animal shelter unit where the animals such as mice, rats, hamsters, guinea pigs, rabbits, and monkeys were monitored for their healthy well-being and observational purposes. The experienced professionals showcased the proper technique of handling animals in the most painless method such the neck grab and tickling.





The available animals are swiss albino rats (7-8 strains), hamsters, black mice, Guinea pigs, wister rats, balbic mice, etc. among them hamsters were used in a preclinical study of covid-19 vaccine (immunology studies).

Guinea pigs are used for studying /observing vit-c deficiency problems, rabbits are mostly used for testing dermatological formulations.

Black mice are used for studying diabetes.





MI NOTE 6 PRO  
DUAL CAMERA





● ○ REDMI NOTE 6 PRO  
MI DUAL CAMERA



